

# Making cars safer and lighter



ArcelorMittal

Steel: the strongest choice

Tailored for tomorrow  
An introduction to ArcelorMittal Tailored Blanks Europe

Bertrand Jacquier – CEO Tailored Blanks Europe

# Our global footprint



### North America

#### ArcelorMittal Tailored Blanks

- Concord, Ontario, Canada
- Woodstock, Ontario, Canada
- Pioneer, Ohio, USA
- Detroit, Michigan, USA
- Murfreesboro, Tennessee, USA
- Silao, Guanajuato, Mexico
- San Luis Potosi, S.L.P., Mexico

#### Delaco ArcelorMittal Tailored Blanks

- Tonawanda, NY, USA (JV)
- Dearborn, Michigan, USA (JV)
- Montezuma, Iowa, USA (JV)

### Europe

#### ArcelorMittal Tailored Blanks

- Birmingham, UK
- Bremen, Germany
- Neuwied, Germany
- Liège, Belgium
- Genk, Belgium
- Gent, Belgium
- Lorraine, France
- Senica, Slovakia
- Zaragoza, Spain
- Orhangazi, Turkey (JV)

### India

- Arcelor Neel Tailored Blank Chennai (JV)
- Arcelor Neel Tailored Blank Pune (JV)

### China

- Shanghai Baosteel & Arcelor Tailor Metal (JV)
- Gonvama Loudi (JV)
- Gonvama Changchun (JV)
- Gonvama Chongqing (JV)
- Gonvama Shenyang (JV)



# Our footprint and facilities in Europe

## Birmingham (UK)

- 1 blanking line + 2 cut-to-length lines
- 3 linear laser welding lines

## Gent (BE)

- 2 blanking lines
- 1 ablation unit
- 6 linear laser welding lines

## Genk (BE)

- 1 blanking line
- 2 ablation + 1 linear welding lines
- 4 laser cutting lines

## Liege (BE)

- 1 blanking line
- 1 spot welding line for patch

## Zaragoza (ES)

- 1 blanking line
- 1 ablation unit
- 4 linear laser welding lines



## Bremen (DE)

- 1 blanking line
- 2 non linear laser welding lines

## Neuwied (DE)

- 1 blanking line

## Senica (SK)

- 1 blanking line
- 3 linear laser welding lines

## Lorraine (FR)

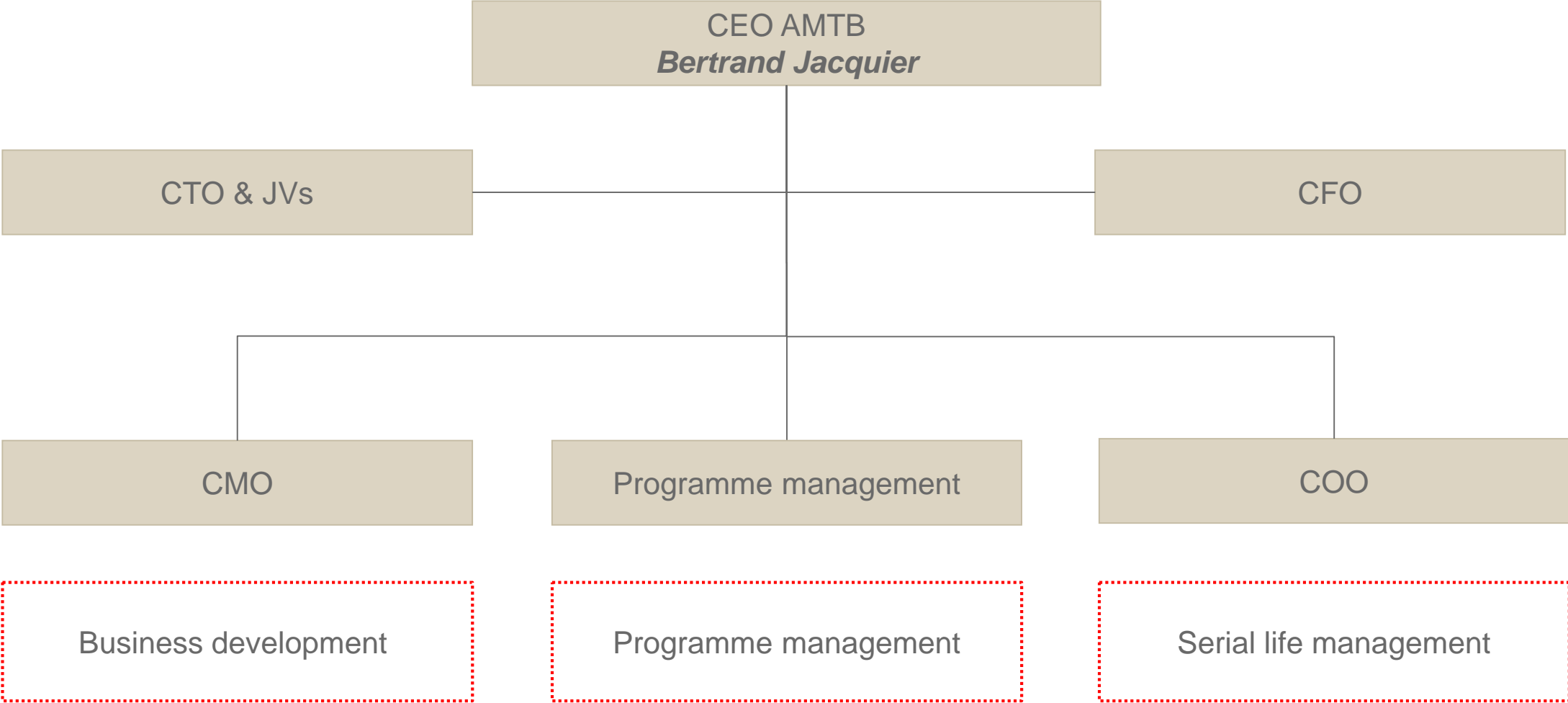
- 3 blanking lines
- 2 ablation units
- 6 linear laser welding lines

## Orhangazi (Jv)

- 1 ablation line
- 2 linear welding lines



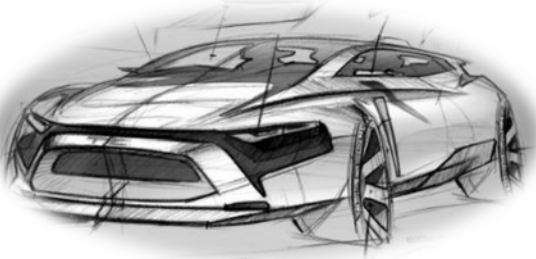
# Supporting you with a tailored organization



# Supporting you through the entire project

Business development

SOP -6y to -3y

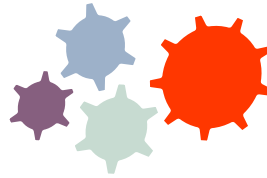


- **Advanced Engineering and Co-engineering:**

- Identify potential improvements according to customers targets: cost, mass, performance
- ArcelorMittal expertise: R&D, automotive experts, simulations, resident engineers

Programme management

SOP < 18 month



- **Preparation and optimization:**

- Formability study of Laser Welded parts
- Prototype and try-outs supply
- Assistance to stamping and joining
- Cost assessment and improvements

Serial life management

SOP to EOL



- **Production & Quality:**

- Service from AMTB
- Customer Technical Support
- Management of changes
- Further optimizations
- EOL management
- Spare parts after EOL



# Tailored for tomorrow

---

- Innovation is nothing if it does not meet our customers needs
  - We innovate to support you from **early co-engineering** to **in-use phase**
  - We innovate with **solutions** impacting **cost** and **environment**
  - We innovate to master **hot stamping laser welded blanks**
  - We innovate to **simplify** your processes and enhance your **efficiency**
  - We innovate with solutions to meet **new market challenges**

